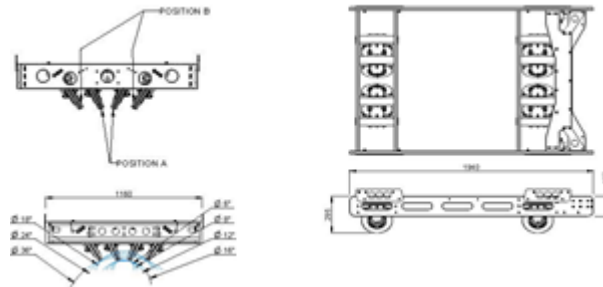
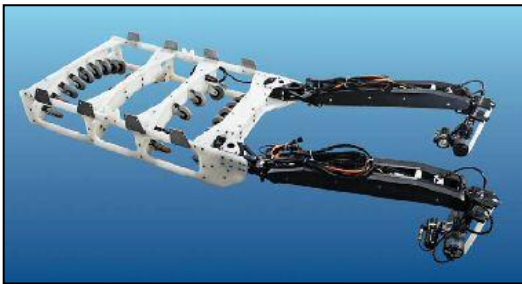


SPECIFICATIONS

Wheeled Skid with Boom Arms, Pan & Tilt Cameras



Pipeline Survey Wheeled Skid with Boom Arms and Pan & Tilt Cameras



HLK 4600PT Camera Boom Arm with Pan & Tilt

Features

- Designed for inspection of pipelines up to 1 metre
- Camera position stable throughout entire 120° angular movement of arm
- Camera mount can be tilted through 120° and rotated through 360°
- Uses HLK-2150 Pan & Tilt



For pipeline inspection, Dive Works utilise a 300mm skid on the bottom of the Leopard ROV which includes two HLK-4600PT boom arms controlled by Hydro-lek 7 Function Valve Packs to move around two sets of Seaeye CAM04P Cameras and iCon Controlled LED Lights to inspect the pipeline from the sides in addition to the ROV Cameras.

